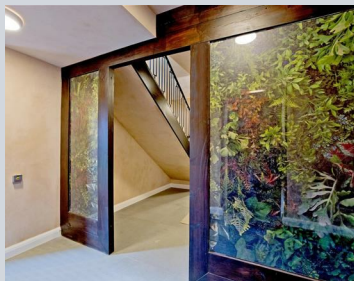


Coppermills

2 bedroom Apartment

Whitehall Road, London, E4

£2,500 Per month



Comprising of 8 spacious two and three-bedroom apartments, perfectly located close to beautiful Epping Forest, yet within easy reach of the bustle of town. The Courtland offers a truly superb place to call home. Here, you are within the desirable Golden Triangle of North Chingford, Buckhurst Hill, and Woodford, where high street stores, luxury boutiques and chic restaurants make everyday life a real pleasure, while the transport links into London are also within an easy reach.

Enjoy the best of both worlds

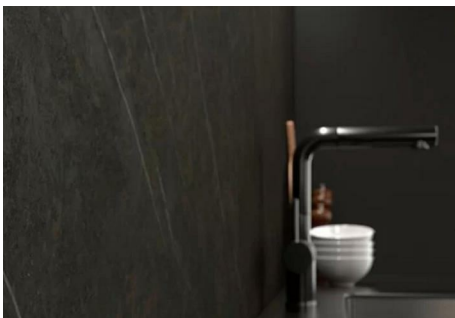
Epping forest, is just a short walk from The Courtland, nestled between Essex and London and is home to wildlife, nature reserves, walks and sites of historic interest. Perfect spot to take your dog for a walk, go for a jog or just enjoy a picnic.

The Courtland is situated within the vicinity of some of the area's best state and private schools alike, namely Bancroft's and Trinity School as well as Beechoak Farm Montessori Pre-School to name a few.

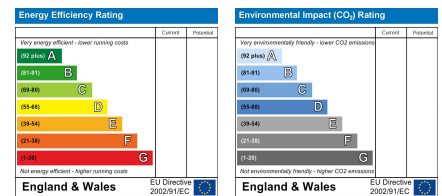
To view this property
info@coppermills.co.uk
020 8509 9170

To view this property
info@coppermills.co.uk
020 8150 1177

Whitehall Road, London, E4



EPC details



info@coppermills.co.uk
T: 020 8150 1177
M: 077 8217 0925
www.coppermills.co.uk
63 St James Street
London E17 7PJ

You may download, store and use the material for your own personal use and research. You may not republish, retransmit, redistribute or otherwise make the material available to any party or make the same available on any website, online service or bulletin board of your own or of any other party or make the same available in hard copy or in any other media without the owner's express prior written consent. The owner's copyright must remain on all reproductions of material taken.